

# STARTING BLOCK SET

## FOR MODERN MotoGP BIKES

1/12 scale kit

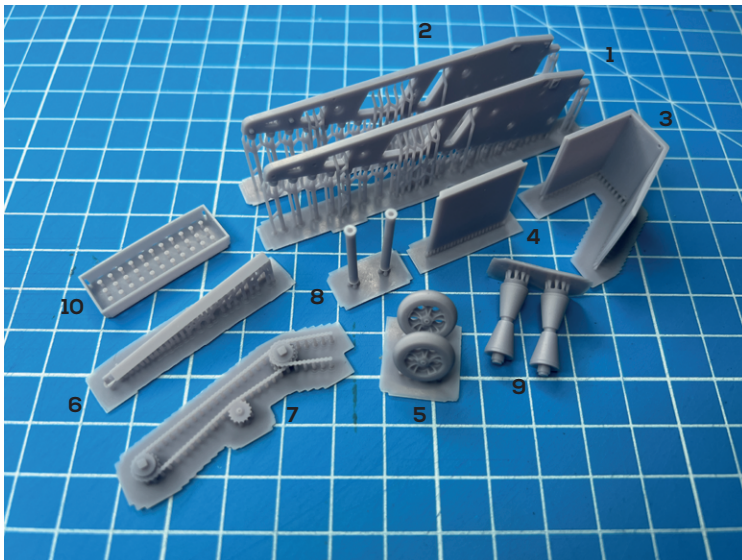


STONE  
MODELS

# ASSEMBLY INSTRUCTIONS

## PARTS DETAIL

### ● Resin Parts



### ● Decal Sheet



## CAUTION

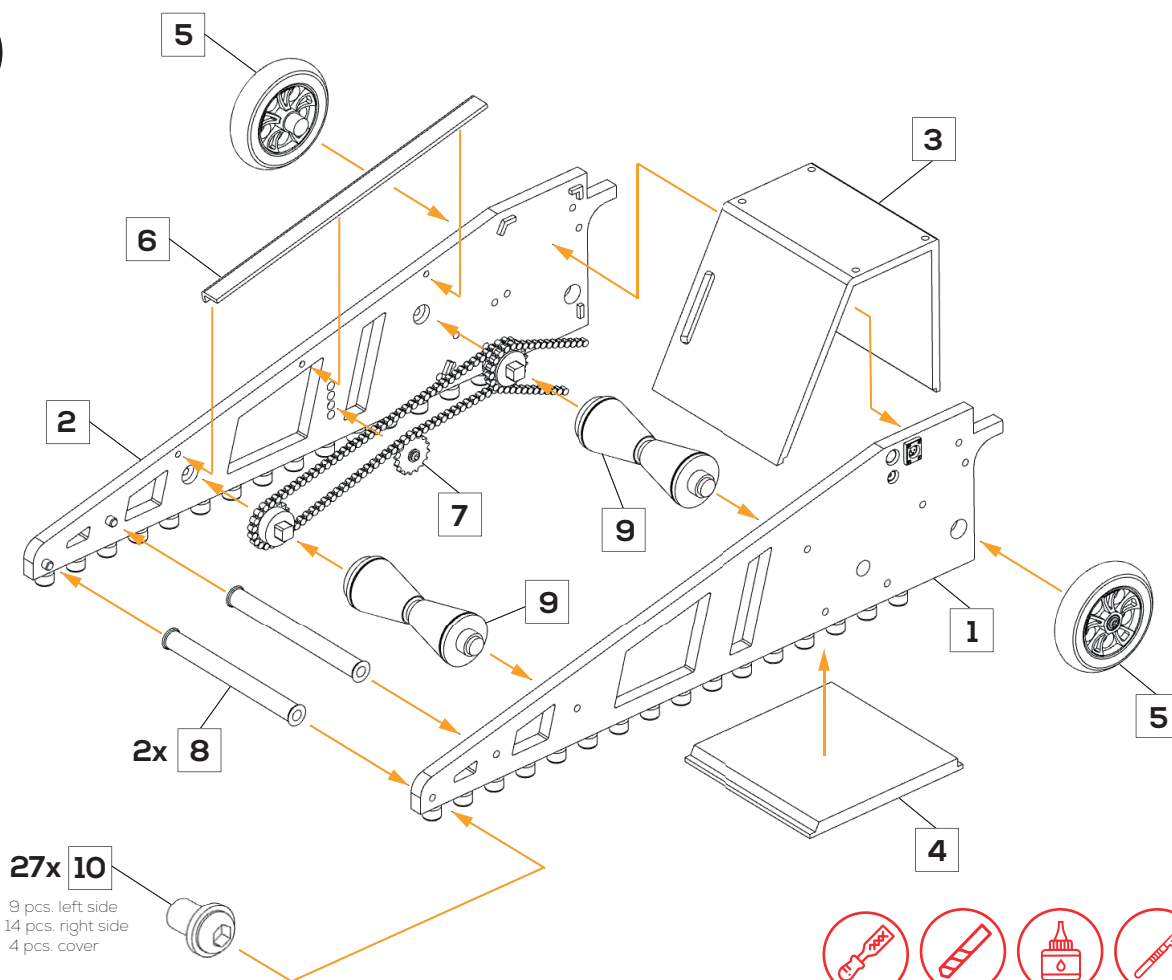
- Read carefully and fully understand all instructions before assembly.
- Extra care should be taken when using tools avoid personal injury.
- When using paint and cement (not included) read and follow their instructions.
- Assemble the kit away from the reach of children.
- Keep all parts and vinyl bags away from children.

A039/2023

## IMPORTANT INFORMATIONS

- The kit is made by 3D print resins.
- Don't use Resin Wash.
- Thin resin parts are easy to deform. Carefully adjust with a hair dryer or hot water at 60°C or higher. Don't boil resin parts.
- Don't immerse in water, hot water, or solvents for a long time. Absorbs water and solvents.
- After washing with water, dry completely.
- Smooth the parts by sand papers and nippers.
- Various type of putty are available.
- Use epoxy or CA glue only.
- Please try temporarily assembly the kit before applying any adhesives.
- Recommend to apply primer surfacer before painting.
- Decals are not pre-cutted. They must be cut individually.
- Don't rub the decals to much, it's easy to scratch.
- If you use any decal softer or setter practice at a not needed decal piece.

1



### Explanation of symbols:



Use a file or  
sandpaper

Drill

Glue

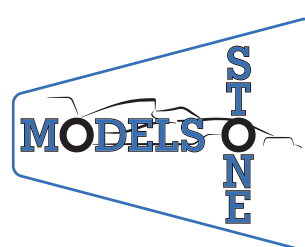
Use a knife or  
scalpel

Don't use a  
knife or side cutter

Use a scissors

Use a side  
cutter

Screw



COPYRIGHT © 2023  
by STONE Models