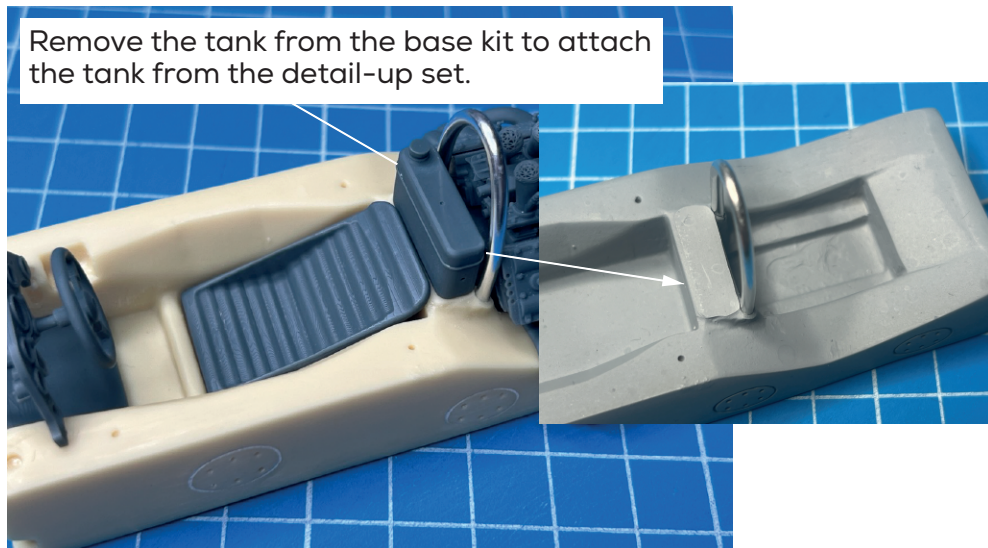


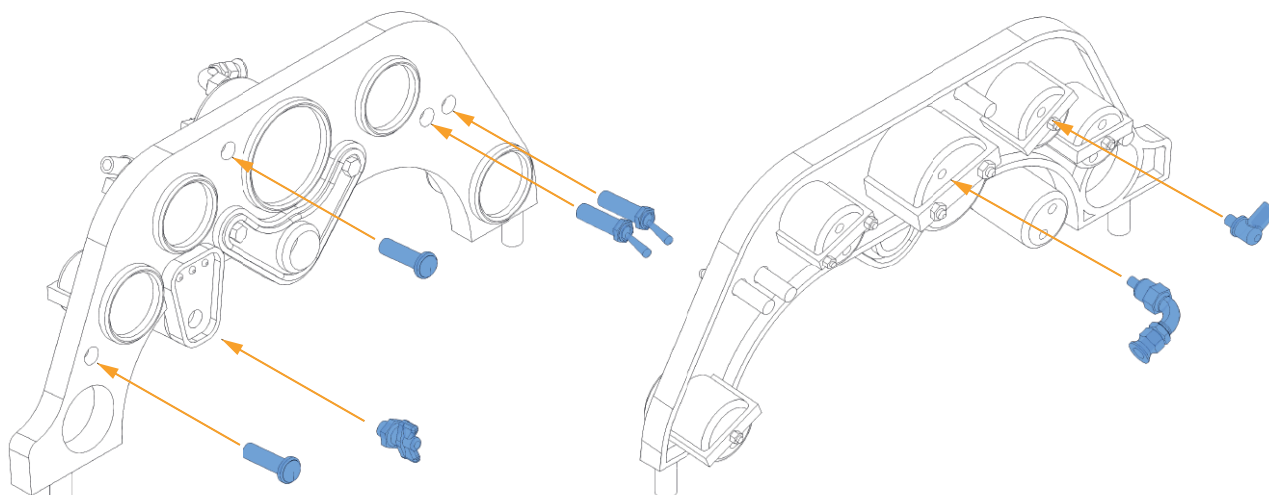
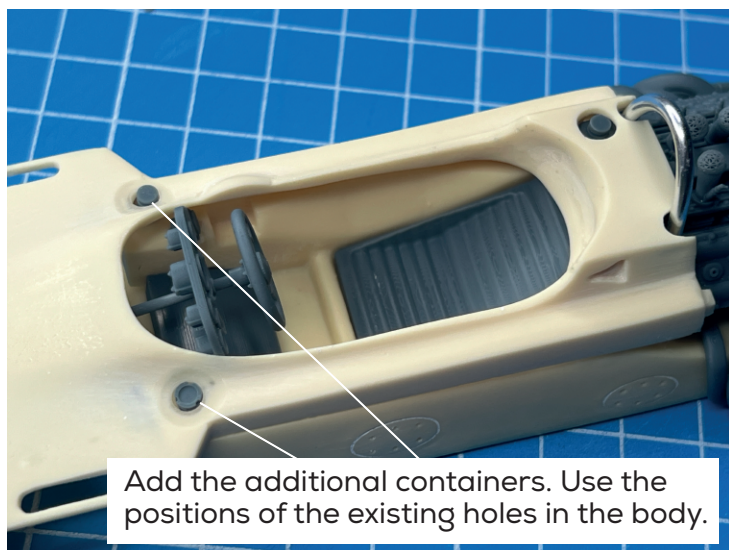
Remove the tank from the base kit to attach the tank from the detail-up set.



Fill the slots and drill new holes for the dashboard set like discribed in A065-2024 instruction.

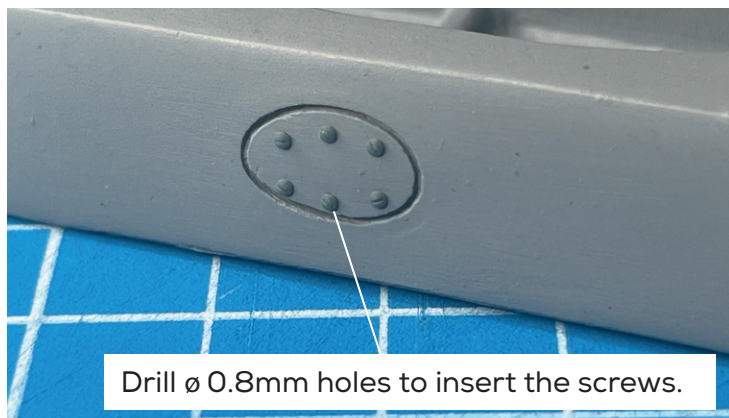


Add the additional containers. Use the positions of the existing holes in the body.

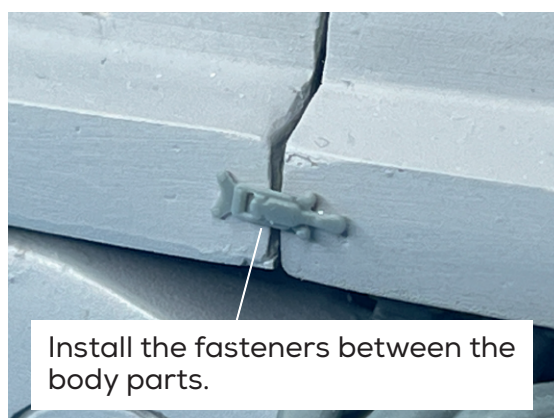


Install the lights, buttons, switches and plugs as showns.

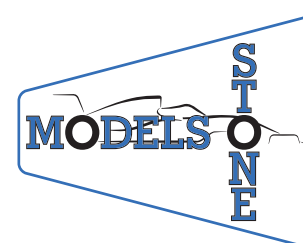
Drill \varnothing 0.8mm holes to insert the screws.



Install the fasteners between the body parts.



STONE Models



COPYRIGHT © 2024
by STONE Models

A090/2024